

PRODUCT LIST



BioSystems

REAGENTS & INSTRUMENTS



Systems





Dear client,

BioSystems S.A. improves the well-being of people around the world

Since 1981, we research, develop, produce and market a wide variety of instruments and reagents of utmost quality and superb features, intended for clinical, veterinary and agri-food laboratories.

We successfully celebrate our 35th anniversary this year!

We have been 35 years with continuous improvement processes, developing a series of policies in line with market demands, based on:

- Own research, development and production
- Priority on quality and customer-oriented services
- A large international network of exclusive distributors, subsidiaries and representative offices

We encourage you to explore BioSystems wide range of products for the laboratory of clinical analysis, which stand out in this catalogue.

We are at your service, willing to help you achieve your goals, and we hope to be your trusted partner for next years.

Kind regards,

Antonio Elduque
CEO
BioSystems S.A.

Summary

CLINICAL CHEMISTRY	3
Biochemistry / Turbidimetry	4
Coagulation	14
Hematology	15
Microcolumn chromatography	16
Standards / calibrators	17
Instruments	19
QUALITY CONTROL	25
Internal quality control	26
External quality control (prevecal)	28
Support material	29
AUTOIMMUNITY	31
Immunofluorescence	32
Elisa	37
Instruments	40
SEROLOGY	43
Alphabetical index	46

BioSystems S.A. reserves the right to change specifications without prior notice.



Clinical Chemistry



Biochemistry / Turbidimetry

Test	Code	RA	RB	mL/Kit	Comment
α1-ACID GLYCOPROTEIN					
Immunoturbidimetric assay					
Multipurpose	31928	1 x 50 mL	-	50	
BA400 Dedicated	22928	2 x 60 mL	-	120	
α-AMYLASE DIRECT					
Direct Substrate					
Multipurpose	11583	5 x 5 mL	-	25	
	11550	6 x 25 mL	-	150	
A15/A25 Dedicated	12550	5 x 20 mL	-	100	
BA400 Dedicated	21550	8 x 20 mL	-	160	
α-AMYLASE-EPS					
IFCC					
Multipurpose	11534	1 x 32 mL	1 x 8 mL	40	WR
BA400 Dedicated	21534	2 x 60 mL	2 x 15 mL	150	
α-AMYLASE PANCREATIC					
IFCC					
Multipurpose	11799	1 x 20 mL	1 x 5 mL	25	
A15/A25 Dedicated	12799	1 x 40 mL	1 x 10 mL	50	
BA400 Dedicated	21799	2 x 60 mL	2 x 15 mL	150	
ACID PHOSPHATASE (ACP)					
SFBC					
Multipurpose (Total)	11548	4 x 10 mL	lyophilized	40	WR
Multipurpose (Non Prostatic)	11548	2 x 10 mL	lyophilized	20	WR
ADENOSINE DEAMINASE (ADA)					
Adenosine-Glutamate Dehydrogenase					
A15/A25 Dedicated	12754	4 x 8 mL	1 x 10 mL	40	WR
ALANINE AMINOTRANSFERASE (ALT/GPT)					
IFCC					
Multipurpose	11832	1 x 40 mL	1 x 10 mL	50	WR
	11533	1 x 160 mL	1 x 40 mL	200	WR
	11568	1 x 400 mL	1 x 100 mL	500	WR
	11562	1 x 800 mL	1 x 200 mL	1000	WR
A15/A25 Dedicated	12533	5 x 40 mL	5 x 10 mL	250	WR
BA400 Dedicated	21533	8 x 60 mL	8 x 15 mL	600	
ALBUMIN					
Bromocresol Green					
Multipurpose	11573	1 x 250 mL	-	250	Std Inc
	11547	2 x 250 mL	-	500	Std Inc
A15/A25 Dedicated	12547	5 x 50 mL	-	250	
BA400 Dedicated	21547	10 x 60 mL	-	600	
ALBUMIN (MICROALBUMINURIA)					
Immunoturbidimetric latex assay					
Multipurpose	31324	1 x 16 mL	1 x 4 mL	20	WR
	31924	1 x 40 mL	1 x 10 mL	50	WR
A15/A25 Dedicated	13324	1 x 40 mL	1 x 10 mL	50	WR
BA400 Dedicated	22324	4 x 60 mL	4 x 15 mL	300	

Test	Code	RA	RB	mL/Kit	Comment
ALKALINE PHOSPHATASE (ALP)-AMP					
AMP Buffer (IFCC)					
Multipurpose	11592	1 x 40 mL	1 x 10 mL	50	WR
	11593	1 x 160 mL	1 x 40 mL	200	WR
	11598	4 x 100 mL	2 x 50 mL	500	WR
A15/A25 Dedicated	12518	5 x 16 mL	2 x 10 mL	100	WR
BA400 Dedicated	21592	4 x 60 mL	4 x 15 mL	300	
ALKALINE PHOSPHATASE (ALP)-DEA					
DEA Buffer					
Multipurpose	11590	1 x 40 mL	1 x 10 mL	50	WR
	11591	4 x 40 mL	4 x 10 mL	200	WR
	11597	4 x 100 mL	2 x 50 mL	500	WR
A15/A25 Dedicated	12514	5 x 16 mL	2 x 10 mL	100	WR
BA400 Dedicated	21590	4 x 60 mL	4 x 15 mL	300	
ANGIOTENSIN CONVERTING ENZYME (ACE)					
FAPGG					
A15/A25 Dedicated	12796	1 x 50 mL	-	50	
BA400 Dedicated	21796	2 x 60 mL	-	120	
ANTI-STREPTOLYSIN O (ASO)					
Immunoturbidimetric latex assay					
Multipurpose	31323	1 x 16 mL	1 x 4 mL	20	WR
	31923	1 x 40 mL	1 x 10 mL	50	WR
	31031	2 x 160 mL	2 x 40 mL	400	WR
A15/A25 Dedicated	13923	1 x 40 mL	1 x 10 mL	50	WR
BA400 Dedicated	22923	2 x 60 mL	2 x 15 mL	150	
ANTITHROMBIN III					
Immunoturbidimetric assay					
Multipurpose	31936	1 x 40 mL	1 x 10 mL	50	
A15/A25 Dedicated	13936	1 x 40 mL	1 x 10 mL	50	
BA400 Dedicated	22936	2 x 60 mL	2 x 15 mL	150	
APOLIPOPROTEIN A-1 (APO A-1)					
Immunoturbidimetric assay					
Multipurpose	31095	1 x 40 mL	1 x 10 mL	50	
BA400 Dedicated	22095	2 x 60 mL	2 x 15 mL	150	
APOLIPOPROTEIN B (APO B)					
Immunoturbidimetric assay					
Multipurpose	31098	1 x 40 mL	1 x 10 mL	50	
BA400 Dedicated	22098	2 x 60 mL	2 x 15 mL	150	
ASPARTATE AMINOTRANSFERASE (AST/GOT)					
IFCC					
Multipurpose	11830	1 x 40 mL	1 x 10 mL	50	WR
	11531	1 x 160 mL	1 x 40 mL	200	WR
	11567	1 x 400 mL	1 x 100 mL	500	WR
	11561	1 x 800 mL	1 x 200 mL	1000	WR
A15/A25 Dedicated	12531	5 x 40 mL	5 x 10 mL	250	WR
BA400 Dedicated	21531	8 x 60 mL	8 x 15 mL	600	

WR: Working Reagent / RB: Reagent B Preparation / Std Inc: Standard Included

Biochemistry / Turbidimetry

Test	Code	RA	RB	mL/Kit	Comment
β2-MICROGLOBULIN					
Immunoturbidimetric latex assay					
Multipurpose	31925	1 x 40 mL	1 x 10 mL	50	WR
BA400 Dedicated	22925	2 x 60 mL	2 x 15 mL	150	
β-HYDROXYBUTYRATE					
Hydroxybutyrate Dehydrogenase/Diaphorase					
A15/A25 Dedicated	12525	1 x 40 mL	1 x 10 mL	50	
BA400 Dedicated	21525	1 x 60 mL	1 x 15 mL	75	
BILIRRUBIN (DIRECT)					
Diazotized Sulfanilic					
Multipurpose	11511	4 x 40 mL	4 x 10 mL	200	WR
	11545	2 x 400 mL	2 x 100 mL	1000	WR
BILIRRUBIN (DIRECT) (AS)					
Diazotized Sulfanilic					
A15/A25 Dedicated	12798	5 x 40 mL	5 x 10 mL	250	RB
BA400 Dedicated	21798	4 x 60 mL	3 x 20 mL	300	RB
BILIRRUBIN (TOTAL)					
Diazotized Sulfanilic					
Multipurpose	11510	4 x 40 mL	4 x 10 mL	200	WR
	11544	2 x 400 mL	2 x 100 mL	1000	WR
A15/A25 Dedicated	12510	5 x 40 mL	5 x 10 mL	250	
BA400 Dedicated	21510	8 x 60 mL	8 x 15 mL	600	
BILIRRUBIN (TOTAL AND DIRECT)					
Diazotized Sulfanilic					
Multipurpose	11515	2 x 50 mL	2 x 50 mL	200	WR
	11555	1 x 500 mL	1 x 500 mL	1000	WR
CALCIUM-ARSENZO					
Arsenazo III					
Multipurpose	11570	1 x 200 mL	-	200	Std Inc
	11571	1 x 500 mL	-	500	Std Inc
A15/A25 Dedicated	12570	10 x 50 mL	-	500	
BA400 Dedicated	21570	10 x 60 mL	-	600	
CALCIUM-CRESOLPHTHALEIN					
O-Cresolphthalein Complexone					
Multipurpose	11811	1 x 160 mL	1 x 40 mL	200	Std Inc, WR
	11812	1 x 400 mL	2 x 50 mL	500	Std Inc, WR
A15/A25 Dedicated	12513	5 x 40 mL	5 x 10 mL	250	
BA400 Dedicated	21511	8 x 60 mL	8 x 15 mL	600	
CALCIUM-MTB					
Methylthymol Blue					
Multipurpose	11527	2 x 50 mL	2 x 50 mL	200	Std Inc, WR
	11507	1 x 250 mL	1 x 250 mL	500	Std Inc, WR

NEW

Test	Code	RA	RB	mL/Kit	Comment
CARBON DIOXIDE (CO₂)					
Phosphoenolpyruvate Carboxylase/ Malate Dehydrogenase					
Multipurpose	11558	1 x 50 mL	-	50	
	11827	1 x 200 mL	-	200	
A15/A25 Dedicated	12558	5 x 50 mL	-	250	
BA400 Dedicated	21558	2 x 60 mL	-	120	
CHOLESTEROL					
Cholesterol Oxidase/Peroxidase					
Multipurpose	11805	1 x 50 mL	-	50	Std Inc
	11505	1 x 200 mL	-	200	Std Inc
	11506	1 x 500 mL	-	500	Std Inc
	11539	1 x 1000 mL	-	1000	Std Inc
A15/A25 Dedicated	12505	10 x 50 mL	-	500	
BA400 Dedicated	21505	10 x 60 mL	-	600	
CHOLESTEROL LDL DIRECT					
Detergent					
Multipurpose	11585	1 x 60 mL	1 x 20 mL	80	
A15/A25 Dedicated	12585	3 x 20 mL	1 x 20 mL	80	
BA400 Dedicated	21585	2 x 60 mL	2 x 20 mL	160	
CHOLESTEROL HDL DIRECT					
Detergent					
Multipurpose	11557	1 x 60 mL	1 x 20 mL	80	
A15/A25 Dedicated	12557	3 x 20 mL	1 x 20 mL	80	
BA400 Dedicated	21557	2 x 60 mL	2 x 20 mL	160	
CHOLESTEROL HDL					
Phosphotungstate/ Mg+2-Cholesterol Oxidase/ Peroxidase Reagent + Precipitant					
Multipurpose	11523	2 x 50 mL	2 x 50 mL	100	Std Inc
CHOLESTEROL HDL PRECIPITATING REAGENT					
Phosphotungstate/ Mg+2 Precipitant					
Multipurpose	11648	1 x 50 mL	-	50	Std Inc
CHOLESTEROL LDL PRECIPITATING REAGENT					
Polyvinyl Sulphate/ Polyethyleneglycol Precipitant					
Multipurpose	11579	1 x 20 mL	-	20	
CHOLINESTERASE (CHE)					
Butyrylthiocholine					
Multipurpose	11588	1 x 40 mL	1 x 10 mL	50	WR
	11589	4 x 40 mL	4 x 10 mL	200	WR
BA400 Dedicated	21588	2 x 60 mL	2 x 15 mL	150	
CITRATE					
Citrate Lyase/ Malate Dehydrogenase					
A15/A25 Dedicated (New presentation)	11895	1 x 20 mL	1 x 5 mL	25	RB + Std Inc
	11795	2 x 20 mL	2 x 5 mL	50	RB + Std Inc

WR: Working Reagent / RB: Reagent B Preparation / Std Inc: Standard Included

Biochemistry / Turbidimetry

Test	Code	RA	RB	mL/Kit	Comment
COMPLEMENT COMPONENT C3					
Immunoturbidimetric assay					
Multipurpose	31073	1 x 50 mL	-	50	
	31079	1 x 250 mL	-	250	
A15/A25 Dedicated	13084	1 x 50 mL	-	50	
BA400 Dedicated	22084	2 x 60 mL	-	120	
COMPLEMENT COMPONENT C4					
Immunoturbidimetric assay					
Multipurpose	31074	1 x 50 mL	-	50	
	31080	1 x 250 mL	-	250	
A15/A25 Dedicated	13085	1 x 50 mL	-	50	
BA400 Dedicated	22085	2 x 60 mL	-	120	
C-REACTIVE PROTEIN (CRP)					
Immunoturbidimetric latex assay					
Multipurpose	31321	1 x 16 mL	1 x 4 mL	20	WR
	31921	1 x 40 mL	1 x 10 mL	50	WR
	31029	2 x 160 mL	2 x 40 mL	400	WR
A15/A25 Dedicated	13921	2 x 40 mL	2 x 10 mL	100	WR
BA400 Dedicated	22921	4 x 60 mL	4 x 15 mL	300	
C-REACTIVE PROTEIN hs (CRP-hs)					
Immunoturbidimetric latex assay, High Sensitivity					
Multipurpose	31927	1 x 40 mL	1 x 10 mL	50	WR
A15/A25 Dedicated	13927	1 x 40 mL	1 x 10 mL	50	WR
BA400 Dedicated	22927	2 x 60 mL	2 x 15 mL	150	
NEW	C-REACTIVE PROTEIN-er (CRP-er)				
	Immunoturbidimetric latex assay, Extended Range				
	BA400 Dedicated	22942	2 x 60 mL	2 x 15 mL	150
		23942	1 x 60 mL	1 x 15 mL	75
CREATINE KINASE (CK)					
IFFC					
Multipurpose	11790	1 x 40 mL	1 x 10 mL	50	WR
	11791	4 x 40 mL	4 x 10 mL	200	WR
A15/A25 Dedicated	12524	3 x 12 mL	1 x 10 mL	45	WR
BA400 Dedicated	21790	2 x 60 mL	2 x 15 mL	150	
CREATINE KINASE-MB (CK-MB)					
Immunoinhibition					
Multipurpose	11792	1 x 40 mL	1 x 10 mL	50	WR
A15/A25 Dedicated	12566	3 x 12 mL	1 x 10 mL	45	WR
BA400 Dedicated	21792	2 x 60 mL	2 x 15 mL	150	
CREATININE					
Jaffé					
Multipurpose	11802	1 x 50 mL	1 x 50 mL	100	Std Inc, WR
	11502	2 x 50 mL	2 x 50 mL	200	Std Inc, WR
	11542	1 x 500 mL	1 x 500 mL	1000	Std Inc, WR
A15/A25 Dedicated	12502	5 x 50 mL	5 x 50 mL	500	WR
BA400 Dedicated	21502	5 x 60 mL	5 x 60 mL	600	

Test	Code	RA	RB	mL/Kit	Comment
CREATININE ENZYMATIC					
Enzymatic					
Multipurpose	11734	1 x 60 mL	1 x 20 mL	80	Std Inc
A15/A25 Dedicated	12734	1 x 45 mL	1 x 15 mL	60	
BA400 Dedicated	21734	2 x 60 mL	2 x 20 mL	160	
NEW	CYSTATIN C				
	Immunoturbidimetric latex assay				
	A15/A25 Dedicated	13160	1 x 45 mL	1 x 15 mL	60
BA400 Dedicated	22180	1 x 60 mL	1 x 20 mL	80	
FERRITIN					
Immunoturbidimetric latex assay					
Multipurpose	31934	1 x 10 mL	1 x 5 mL	15	WR
	31935	1 x 30 mL	1 x 15 mL	45	WR
A15/A25 Dedicated	13934	1 x 30 mL	1 x 15 mL	45	WR
BA400 Dedicated	22934	2 x 40 mL	2 x 20 mL	120	
FIBRINOGEN					
Immunoturbidimetric assay					
Multipurpose	31600	1 x 40 mL	1 x 10 mL	50	
A15/A25 Dedicated	13600	1 x 40 mL	1 x 10 mL	50	
BA400 Dedicated	22804	2 x 60 mL	2 x 15 mL	150	
FRUCTOSAMINE					
NBT					
Multipurpose	11046	2 x 50 mL	-	100	Std Inc
FRUCTOSE					
Hexokinase/ Phosphoglucose Isomerase					
A15/A25 Dedicated	11794	1 x 40 mL	1 x 10 mL	50	Std Inc, WR
γ-GLUTAMYLTRANSFERASE (γ-GT)					
IFCC					
Multipurpose	11584	1 x 40 mL	1 x 10 mL	50	WR
	11520	1 x 160 mL	1 x 40 mL	200	WR
A15/A25 Dedicated	12520	5 x 40 mL	5 x 10 mL	250	WR
BA400 Dedicated	21520	4 x 60 mL	4 x 15 mL	300	
GLUCOSE					
Glucose Oxidase/ Peroxidase					
Multipurpose	11803	1 x 50 mL	-	50	Std Inc
	11503	1 x 200 mL	-	200	Std Inc
	11504	1 x 500 mL	-	500	Std Inc
	11538	1 x 1000 mL	-	1000	Std Inc
A15/A25 Dedicated	12503	10 x 50 mL	-	500	
BA400 Dedicated	21503	10 x 60 mL	-	600	
GLUCOSE-HEXOKINASE					
Hexokinase					
Multipurpose	11656	1 x 200 mL	-	200	Std Inc, WR
A15/A25 Dedicated	12756	2 x 24 mL	2 x 10 mL	100	
BA400 Dedicated	21656	4 x 60 mL	4 x 15 mL	300	

WR: Working Reagent / RB: Reagent B Preparation / Std Inc: Standard Included

Biochemistry / Turbidimetry

Test	Code	RA	RB	mL/Kit	Comment
HEMOGLOBIN A1C-DIRECT (HbA1C-DIR)					
Immunoturbidimetric latex assay					
Multipurpose	31047	1 x 50 mL	1 x 10 mL	60	
A15/A25 Dedicated	13047	1 x 50 mL	1 x 10 mL	60	
BA400 Dedicated	22047	2 x 60 mL	2 x 12 mL	144	
HEMOGLOBIN A1C-ENZYMATIC (HbA1C-ENZ)					
Enzymatic					
Multipurpose	11735	1 x 50 mL	1 x 20 mL	70	Std Inc, WR
A15/A25 Dedicated	12735	1 x 50 mL	1 x 20 mL	70	Std Inc, WR
NEW	HOMOCYSTEINE				
	Enzymatic Cycling				
	A15/A25 Dedicated	12737	1 x 40 mL	1 x 10.8 mL	50.8
BA400 Dedicated	21737	1 x 60 mL	1 x 16.2 mL	76.2	
IMMUNOGLOBULIN A (IgA)					
Immunoturbidimetric assay					
Multipurpose	31071	1 x 50 mL	-	50	
	31077	1 x 250 mL	-	250	
A15/A25 Dedicated	13082	1 x 50 mL	-	50	
BA400 Dedicated	22082	2 x 60 mL	-	120	
IMMUNOGLOBULIN G (IgG)					
Immunoturbidimetric assay					
Multipurpose	31070	1 x 50 mL	-	50	
	31077	1 x 250 mL	-	250	
A15/A25 Dedicated	13081	1 x 50 mL	-	50	
BA400 Dedicated	22081	2 x 60 mL	-	120	
IMMUNOGLOBULIN M (IgM)					
Immunoturbidimetric assay					
Multipurpose	31072	1 x 50 mL	-	50	
	31078	1 x 250 mL	-	250	
A15/A25 Dedicated	13083	1 x 50 mL	-	50	
BA400 Dedicated	22083	2 x 60 mL	-	120	
IRON-CHROMAZUROL					
Chromazurol B					
Multipurpose	11546	4 x 50 mL	-	200	Std Inc
IRON-FERROZINE					
Ferrozine					
Multipurpose	11509	1 x 40 mL	1 x 10 mL	200	Std Inc, WR
A15/A25 Dedicated	12509	5 x 40 mL	5 x 10 mL	250	
BA400 Dedicated	21509	4 x 60 mL	4 x 15 mL	300	
LACTATE					
Lactate Oxidase/ Peroxidase					
Multipurpose	11736	1 x 40 mL	1 x 10 mL	50	WR
A15/A25 Dedicated	12736	2 x 40 mL	2 x 10 mL	100	
BA400 Dedicated	21736	4 x 60 mL	4 x 15 mL	300	

Test	Code	RA	RB	mL/Kit	Comment	
LACTATE DEHYDROGENASE (LDH)						
Pyruvate						
Multipurpose	11580	1 x 40 mL	1 x 10 mL	50	WR	
	11581	1 x 160 mL	1 x 40 mL	200	WR	
A15/A25 Dedicated	12580	5 x 40 mL	5 x 10 mL	250	WR	
BA400 Dedicated	21580	8 x 60 mL	8 x 15 mL	600		
LACTATE DEHYDROGENASE (LDH)-IFCC						
IFCC						
Multipurpose	11586	1 x 40 mL	1 x 10 mL	50	WR	
	11587	1 x 160 mL	1 x 40 mL	200	WR	
BA400 Dedicated	21586	8 x 60 mL	8 x 15 mL	600		
LIPASE						
Color						
Multipurpose	11793	1 x 50 mL	1 x 10 mL	60	Std Inc	
A15/A25 Dedicated	12793	2 x 20 mL	1 x 8 mL	48		
BA400 Dedicated	21793	2 x 50 mL	1 x 20 mL	120		
MAGNESIUM						
Xylidyl Blue						
Multipurpose	11797	4 x 40 mL	4 x 10 mL	200	Std Inc, WR	
A15/A25 Dedicated	12797	5 x 16 mL	2 x 10 mL	100	WR	
BA400 Dedicated	21797	2 x 60 mL	2 x 15 mL	150		
NEW	OXALATE					
	Oxalate Oxidase/ Peroxidase					
	A15/A25 Dedicated	12539	1 x 20 mL	1 x 5 mL	25 (20 tubes)	Std Inc, RB
	Pretreatment Reagents	11839	-	-	100 tubes	
PHOSPHORUS						
Phosphomolybdate/ UV						
Multipurpose	11508	3 x 40 mL	1 x 50 mL	170	Std Inc, WR	
A15/A25 Dedicated	12508	3 x 24 mL	2 x 15 mL	100		
BA400 Dedicated	21508	4 x 60 mL	2 x 50 mL	340		
PREALBUMIN						
Immunoturbidimetric assay						
Multipurpose	31929	1 x 50 mL	-	50		
BA400 Dedicated	22929	2 x 60 mL	-	120		
PROTEIN (TOTAL)						
Biuret						
Multipurpose	11800	1 x 50 mL	-	50	Std Inc	
	11572	1 x 250 mL	-	250	Std Inc	
	11500	2 x 250 mL	-	500	Std Inc	
	11553	1 x 1000 mL	-	1000	Std Inc	
A15/A25 Dedicated	12500	10 x 50 mL	-	500		
BA400 Dedicated	21500	10 x 60 mL	-	600		

WR: Working Reagent / RB: Reagent B Preparation / Std Inc: Standard Included

Biochemistry / Turbidimetry

Test	Code	RA	RB	mL/Kit	Comment
PROTEIN (URINE+CSF)					
Pyrogallol Red					
Multipurpose	11501	4 x 50 mL	-	200	Std Inc
	11559	2 x 250 mL	-	500	Std Inc
A15/A25 Dedicated	12501	5 x 50 mL	-	250	Std Inc
BA400 Dedicated	21501	4 x 60 mL	-	240	
RHEUMATOID FACTORS (RF)					
Immunoturbidimetric latex assay					
Multipurpose	31322	1 x 16 mL	1 x 4 mL	20	
	31922	1 x 40 mL	1 x 10 mL	50	
	31030	2 x 160 mL	2 x 40 mL	400	
A15/A25 Dedicated	13922	1 x 40 mL	1 x 10 mL	50	
BA400 Dedicated	22922	4 x 60 mL	4 x 15 mL	300	
TOTAL BILE ACIDS					
Enzymatic Cycling					
A15/A25 Dedicated	12521	1 x 18 mL	1 x 6 mL	24	Std Inc
BA400 Dedicated	21551	2 x 60 mL	2 x 20 mL	160	
TOTAL IRON BINDING CAPACITY (TIBC)					
Fe3+ / Magnesium Hydroxide Carbonate Precipitating					
Multipurpose	11554	50 mL	3 g	50	
TRANSFERRIN					
Immunoturbidimetric assay					
Multipurpose	31091	1 x 20 mL	-	20	
	31092	1 x 50 mL	-	50	
	31093	1 x 250 mL	-	250	
A15/A25 Dedicated	13091	1 x 50 mL	-	50	
BA400 Dedicated	22091	2 x 60 mL	-	120	
TRIGLYCERIDES					
Glycerol Phosphate Oxidase/ Peroxidase					
Multipurpose	11828	1 x 50 mL	-	50	Std Inc
	11528	4 x 50 mL	-	200	Std Inc
	11529	2 x 250 mL	-	500	Std Inc
A15/A25 Dedicated	12528	10 x 50 mL	-	500	
BA400 Dedicated	21528	10 x 60 mL	-	600	
UNSATURATED IRON BINDING CAPACITY (UIBC)					
Ferrozine					
Multipurpose	11835	1 x 40 mL	1 x 10 mL	50	
A15/A25 Dedicated	12835	1 x 40 mL	1 x 10 mL	50	
BA400 Dedicated	21835	2 x 60 mL	2 x 15 mL	150	
UREA/ BUN-COLOR					
Urease/ Salicylate					
Multipurpose	11536	2 x 50 mL	2 x 50 mL	200	Std Inc, RA
	11537	1 x 250 mL	1 x 250 mL	500	Std Inc, RA

NEW

Test	Code	RA	RB	mL/Kit	Comment
UREA/ BUN-UV					
Urease/ Glutamate Dehydrogenase					
Multipurpose	11516	4 x 40 mL	4 x 10 mL	200	Std Inc, WR
	11517	2 x 200 mL	2 x 50 mL	500	Std Inc, WR
	11541	1 x 800 mL	1 x 200 mL	1000	Std Inc, WR
A15/A25 Dedicated	12516	5 x 40 mL	5 x 10 mL	250	WR
BA400 Dedicated	21516	8 x 60 mL	8 x 15 mL	600	
URIC ACID					
Uricase/Peroxidase					
Multipurpose	11821	1 x 50 mL	-	50	Std Inc
	11521	1 x 200 mL	-	200	Std Inc
	11522	1 x 500 mL	-	500	Std Inc
	11540	1 x 1000 mL	-	1000	Std Inc
A15/A25 Dedicated	12521	10 x 50 mL	-	500	
BA400 Dedicated	21521	10 x 60 mL	-	600	
ZINC					
Bromo-PAPS					
A15/A25 Dedicated	12526	2 x 20 mL	1 x 10 mL	50	Std Inc, RA



WR: Working Reagent / **RB:** Reagent B Preparation / **Std Inc:** Standard Included

Coagulation

Product	Code	Presentation
PROTHROMBIN TIME (PT)		
Rabbit Brain Thromboplastin	61001	4 x 5 mL
ACTIVATED PARTIAL THROMBOPLASTIN TIME (APTT)		
Rabbit Brain Cephalin and Micronized Silica	61004	4 x 4 mL
APTT B: CaCl ₂ buffer solution	61005	4 x 16 mL
APTT A + APTT B	61009	4 x 4 mL + 1 x 16 mL
FIBRINOGEN CLAUSS		
Human Thrombin	61002	4 x 2 mL
Fibrinogen B: Imidazol buffer solution	61003	4 x 15 mL
THROMBIN TIME (TT)		
Human Thrombin	61004	4 x 3 mL
COAGULATION CALIBRATOR		
Prothrombin Time (TP) and Fibrinogen Clauss	61006	4 x 1 mL
COAGULATION CONTROL		
LEVEL I: PT, APTT, TT and Fibrinogen Clauss	61007	4 x 1 mL
LEVEL II: PT, APTT and Fibrinogen Clauss	61008	4 x 1 mL

NEW



Hematology



HA3

Hematology Analyzer

The HA3 Hematology Analyzer is based on the volumetric impedance method and incorporates **microfluidic technology** to reduce reagent consumption providing optimal determination of the parameters.

- ▶ Compact design
- ▶ Two operating modes: open/closed
- ▶ 60 t/h closed mode
- ▶ Full-color touch screen
- ▶ 22 parameters, 3 histograms
- ▶ LIS connection; results sent by e-mail
- ▶ Remote instrument support
- ▶ Consumption management
- ▶ Low reagent consumption: **5.5 mL of diluent per test**

Code 86003



Consumables HA3

Product	Code	Presentation
REAGENT PACK 100 TEST	60110	1.85 L
REAGENT PACK 500 TEST	60112	5.45 L
CONTROL BLOOD 3 DIFF (LEVEL: HIGH, NORMAL, LOW)	60109	3 x 2.5 mL
CLEANING SOLUTION	60108	100 mL

Microcolumn Chromatography

Code	Quantity	Components
5-AMINOLEVULINIC ACID (ALA)/ PORPHOBILINOGEN (PBG)		
11017	40 tests	EHRlich REAGENT ALA Standard included
CONTROL URINE		
	1 x 20 mL 10 x 20 mL	Albumin, 5-Aminolevulinic acid, 5-Hydroxyindoleacetic acid, 17 Hydroxycorticosteroids, 17-Ketosteroids, Metanephrines, Protein and Vanilmandelic acid.
HEMOGLOBIN A1C		
11044	20 tests	ION EXCHANGE
11045	100 tests	TEMPERATURE INDEPENDENT
HEMOGLOBIN A2		
11077	20 tests	ION EXCHANGE
11078	100 tests	HbS INTERFERENCE FREE
5-HYDROXYINDOLEACETIC ACID (5-HIAA)		
11010	40 tests	NITROSE NAFTOL Standard included
17-HYDROXYCORTICOSTEROIDS (17-OH)		
11006	40 tests	PORTER-SILBER Standard included
17-KETOSTEROIDS		
11002	40 tests	ZIMMERMANN Standard included
METANEPHRINES		
11022	40 tests	PISANO Standard included
VANILMANDELIC ACID		
11003	20 tests	PERIODATE Standard included

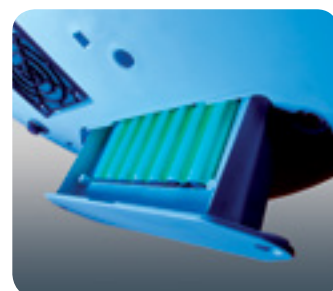
Standards / Calibrators

Code	Quantity	Method
ADENOSINE DEAMINASE (ADA)		
18052	1 x 1 mL	Adenosine Deaminase (ADA)
ALBUMIN (MICROALBUMINURIA)		
31130	1 x 1 mL	Albumin (microalbuminuria)
ANTI-STREPTOLYSIN O (ASO)		
31119	1 x 1 mL	Anti-Streptolysin O (ASO)
APOLIPOPROTEIN A-I		
31100	1 x 1 mL	Apolipoprotein A-I
APOLIPOPROTEIN B		
31200	1 x 1 mL	Apolipoprotein B
β2-MICROGLOBULIN		
31122	1 x 1 mL	β2-Microglobulin
BIOCHEMISTRY		
18011	5 x 5 mL	ACE, ACP, Albumin, ALP, ALT/GPT, AST/GOT, α-Amylase, β-hydroxybutyrate, Total Bilirubin, Calcium, Cholesterol, Chloride, CK, Creatinine, Direct Bilirubin, Iron, Lactate, LDH, Lipase, Glucose, γ-GT, Magnesium, Phosphorus, Potassium, Protein (total), Sodium, Total Bile Acids, Triglycerides, UIBC, Urea, Uric acid, and Zinc.
BIOCHEMISTRY (HUMAN)		
18044	5 x 5 mL	ACE, ACP, Albumin, ALP, ALT/GPT, AST/GOT, α-Amylase, β-hydroxybutyrate, Pancreatic, Total Bilirubin, Creatinine, Calcium, Chloride, CK, γ-GT, Cholesterol, Lactate, LDH, Lipase, LDL-Cholesterol, HDL-Cholesterol, Cholinesterase, Direct Bilirubin, Glucose, Iron, Triglycerides, Magnesium, Phosphorus, Potassium, Protein (total), Sodium, UIBC, Urea, Uric acid, and Zinc.
BILIRUBIN		
11513	1 x 5 mL	Bilirubin
CARBON DIOXIDE		
11833	1 x 1 mL	Carbon Dioxide
CHOLESTEROL HDL/LDL		
11693	1 x 1 mL	HDL Cholesterol Direct/ LDL Cholesterol Direct

Standards / Calibrators

	Code	Quantity	Method
	CK-MB		
	11824	1 x 1 mL	CK-MB
NEW	CYSTATIN C		
	31181	5 x 1 mL	Cystatin C
	CRP/CRP-hs		
	31113	1 x 1 mL/5 mL	CRP and CRP-hs
NEW	CRP-er		
	31182	1 x 3 mL	CRP-er
	FERRITIN		
	31127	1 x 3 mL	Ferritin
	FIBRINOGEN		
	31601	1 x 1	Fibrinogen
	HbA1C-DIRECT		
	31048	4 x 0.5 mL	HbA1C
	HbA1C-ENZYMATIC		
	11733	2 x 0.5 mL	HbA1C
NEW	HOMOCYSTEINE		
	11750	5 x 1 mL	Homocysteine
	PROTEIN		
	31075	5 x 1 mL	Set of five Levels. Antithrombin III, α 1-Acid Glycoprotein, IgG, IgA, IgM, Complement C3, Complement C4, Prealbumin and Transferrin.
	PROTEIN (URINE)		
	11603	1 x 5 mL	Protein (Urine)
	RHEUMATOID FACTORS (RF)		
	31116	1 x 3 mL	Rheumatoid Factor (RF)

Instruments



Semi-Automatic Analyzer LED Technology

- ▶ LED configuration: 340, 405, 505, 535, 560, 600, 635, 670 mm.
- ▶ LED Wavelengths optional: 450 nm.
- ▶ Durable, humidity proof Hard Coated Filters.
- ▶ Battery Power Pack (2hrs)-OPTIONAL (AC14773).
- ▶ Photometric Range 0.0-3.5A for all wavelengths.
- ▶ Flow Cuvette 18 ml (macro, semi-micro and microcuvette).
- ▶ Levy-Jennings QC chart (based on Westgard's Rules).
- ▶ Calibration by Factor, single calibrator or calibration curve.
- ▶ Maximum power of 30 W. (minimal energy consumption).
- ▶ USB Port to export data (results and graphs).
- ▶ The lowest maintenance.

Code 80175



Instruments



A15

Random Access Analyzer

- ▶ Innovative Design and functional robustness.
- ▶ Low water consumption, less than 0.5 L/ hour.
- ▶ Throughput of 150 tests/hour.
- ▶ Real prozone detection function.
- ▶ Primary tubes and pediatric vials in any position.
- ▶ Maximum flexibility in the positioning of samples and reagents.
- ▶ Minimum reading volume of 180 μ L.
- ▶ Clinical Chemistry and Turbidimetry dedicated reagents.
- ▶ Filter configuration 340, 405, 505, 535, 560, 600, 635, 670 nm.

Code 83105





A25

Random Access Analyzer

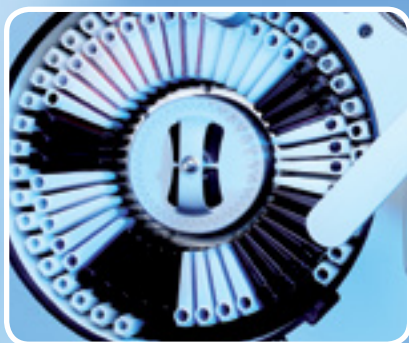
- ▶ Throughput of 240 tests/hour.
- ▶ Clinical Chemistry and Turbidimetry dedicated reagents.
- ▶ 30 refrigerated positions by 20 and 50 mL reagents bottles.
- ▶ Flexibility in positioning with polyvalent (sample and reagent) racks.
- ▶ Real prozone detection function.
- ▶ Unlimited STAT capabilities. Run at any time.
- ▶ Minimum reading volume of 180 mL.
- ▶ Filter configuration 340, 405, 505, 535, 560, 600, 635, 670 nm.
- ▶ Automatic conditioning of fluid system.

Code 83101

Consumables A15 / A25

Code	Presentation	Description
B011524	1000 mL	Concentrated system liquid
B013416	100 mL	Concentrated washing solution
AC11485	10 uds.	Reaction rotor
A1K110	1 ud.	Power Supply Unit, 110 VA
A1K220	1 ud.	Power Supply Unit, 220 VA
AC17200	4 x 20 mL	Acid Washing Solution (WS1)

Instruments



Random Access Analyzer

- ▶ Throughput of 400 test/hour (Clinical Chemistry and Turbidimetry).
- ▶ Optical system based on LED technology that assures unlimited lifetime avoiding lamp replacement and improving sensitivity.
- ▶ Photometric range up to 3.5Abs and optical resolution of 0.0001Abs.
- ▶ Capacity up to 135 sample positions (90 samples with barcode).
- ▶ 88 Cooling reagents on board (5 - 8oC) by 20 and 60 mL dedicated reagent bottles.
- ▶ Easy STAT samples positioning. Non fixed positions for samples, control, calibrator nor STAT.
- ▶ Barcode readers for sample and reagents.
- ▶ High durability Hardware components (Ceramic pistons, Hard coated filters, etc.).
- ▶ Low water consumption (Less than 14 L/h)
- ▶ ISE module, Na, K, Cl, Li (optional).
- ▶ Minimum user maintenance.
- ▶ Less then 14 L/h water consumption and energy-efficient management.
- ▶ Capacity to fully integrate into LIS.
- ▶ Compact system with no peripherals (external bottles, pumps/compressors, weighing scales, additional tubes, etc.).

Code 83400



reddot award 2014
winner

*Red Dot Award for
high design quality*

Consumables

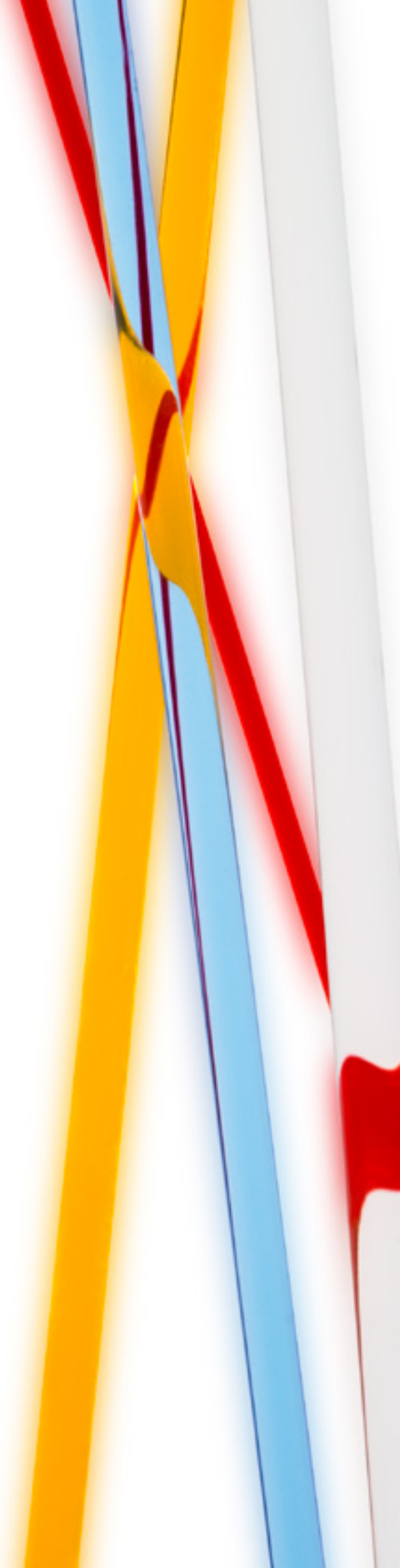
Code	Presentation	Description
AC11485	10 units	Reaction rotors
AC16434	500 mL	Concentrated washing solution
A1K1500	1 unit	Power Supply Unit 1500 VA
AC10770	1000 units	Sample wells (Pediatric cups)
AC16362	10 units	Reagent bottles 60 mL + caps
AC16363	10 units	Reagent bottles 20 mL + caps
AC16364	10 units	Amber reagent bottles 60 mL + caps
AC16365	10 units	Amber reagent bottles 20 mL + caps
AC17201	5 x 20 mL	Acid washing solution (WS1)

ISE Module	Presentation	Description
5201	1 unit	Sodium Electrode (Na ⁺)
5202	1 unit	Potassium Electrode (K ⁺)
5207	1 unit	Chloride Electrode (Cl ⁻)
5204	1 unit	Reference Electrode
5205	1 unit	Lithium Electrode (Li ⁺)
5420	1 unit	Reagent pack Na/K/Cl/Li
5412	125 mL	Urine diluent 125 ml
5408	500 mL	Urine diluent 500 ml
5421	1 unit	ISE Cleaning solution Kit
2814	1 unit	Bi-level quality control kit (Na/K/Cl/Li)
2815	1 unit	Tri-level quality control kit (Na/K/Cl/Li)





Quality Control



Internal Quality Control

Code	Quantity	Level	Components
ADA			
18048	2 x 1 mL	LEVEL I and II	Adenosine Deaminase
BIOCHEMISTRY SERUM			
18009	5 x 5 mL	LEVEL I	ACE, ACP, Albumin, ALP, ALT/GPT, AST/GOT, α -Amylase, β -hydroxybutirate, Direct and Total Bilirubin, Total Bile Acids, Calcium, Chloride, Cholesterol, HDL-Cholesterol, CK, Creatinine, Glucose, γ -GT, Iron, LDH, Lactate, Lipase, Magnesium, Phosphorus, Potassium, Protein Total, Sodium, Triglycerides, UIBC, Urea, Uric acid and Zinc.
18005	20 x 5 mL		
18010	5 x 5 mL	LEVEL II	
18007	20 x 5 mL		
BIOCHEMISTRY SERUM (HUMAN)			
18042	5 x 5 mL	LEVEL I	ACE, ACP, Albumin, ALP, ALT/GPT, AST/GOT, α -Amylase, α -Amylase Pancreatic, β -hydroxybutirate, Direct and Total Bilirubin, Calcium, Chloride, Cholesterol, Cholesterol-HDL, Cholesterol-LDL, Cholinesterase, CK, Creatinine, Glucose, γ -GT, Iron, Lactate, LDH, Lipase, Magnesium, Phosphorus, Potassium, Protein total, Sodium, Triglycerides, UIBC, Urea, Uric acid and Zinc.
18043	5 x 5 mL	LEVEL II	
BIOCHEMISTRY URINE			
18054	1 x 5 mL		Albumin, α -Amylase, α -Amylase Pancreatic, Calcium, Chloride, Citrate, Creatinine, Glucose, Magnesium, Phosphorus, Potassium, Protein urine, Sodium, Urea and Uric acid.
β2-MICROGLOBULIN			
31592	2 x 1 mL	LEVEL I and II	β 2-Microglobulin
β2-MICROGLOBULIN URINE			
31215	1 x 3 mL		β 2-Microglobulin
CARBON DIOXIDE			
11826	1 x 2 mL		Carbon dioxide
CK-MB SERUM			
18024	1 x 1 mL	LEVEL I	CK, and CK-MB
18061	1 x 1 mL	LEVEL II	
NEW CYSTATIN C			
18060	2 x 1 mL	LEVEL I and II	Cystatin C

Internal Quality Control

Code	Quantity	Level	Components	
FERTILITY BIOCHEMISTRY				
18053	1 x 1 mL		Citrate, Fructose and Zinc	
FIBRINOGEN				
31602	1 x 1mL		Fibrinogen	
FRUCTOSAMINE				
18057	1 x 1 mL		Fructosamine	
HEMOGLOBIN A1C				
18001	1 x 0.5 mL	NORMAL	HbA1c (Chromatography, Immunoinhibition, Direct turbidimetry and Enzymatic methods)	
18002	1 x 0.5 mL	ELEVATED		
HEMOGLOBIN A2				
10011	1 x 0.5 mL	ELEVATED	HbA2 (Chromatography)	
NEW	HOMOCYSTEINE			
	18058	1 x 1 mL	LEVEL I	Homocysteine
	18059	1 x 1 mL	LEVEL II	
LIPID SERUM				
18040	3 x 1 mL	LEVEL I	Apolipoprotein A-I, Apolipoprotein B, Cholesterol, Cholesterol-HDL, Cholesterol-LDL and Triglycerides	
18041	3 x 1 mL	LEVEL II		
NEW	OXALATE URINE			
	18062	1 x 5 mL		Oxalate
PROTEIN SERUM				
31211	3 x 1 mL	LEVEL I	Antithrombin III, α 1-Acid Glycoprotein, Complement C3, Complement C4, C-Reactive Protein-hs, Ferritin, IgG, IgA, IgM, Prealbumin and Transferrin	
31212	3 x 1 mL	LEVEL II		
RHEUMATOID SERUM				
31213	3 x 1 mL	LEVEL I	Anti-Streptolysin O, C-Reactive Protein, Rheumatoid Factors	
31214	3 x 1 mL	LEVEL II		

External Quality Control

PREVECAL

www.prevecal.net

International External Quality Assessment Scheme

- ▶ Yearly program for the comparison of results between laboratories.
- ▶ Monthly measurements of different control materials
- ▶ The final report summarises all monthly reports and shows additional data on performance and capability
- ▶ 6-sigma quality management for the assessment for each measurement procedure of the laboratory
- ▶ On-line participation through www.prevecal.net

CLINICAL CHEMISTRY

Code	Quantity	Components
PREVECAL BIOCHEMISTRY (BOVINE)		
18027	12 x 5 mL	ACP, Albumin, ALP, ALT/GPT, AST/GOT, α -Amylase, Total Bilirubin, Calcium, Chloride, Cholesterol, HDL-Cholesterol, Cholinesterase, CK, Creatinine, Glucose, γ -GT, Iron, LDH, Lipase, Magnesium, Phosphorus, Potassium, Proteins, Sodium, Triglycerides, Urea and Uric acid.
PREVECAL BIOCHEMISTRY HUMAN		
18045	12 x 5 mL	Alt, Albumin, α -Amylase, Ast, Direct and Total Bilirubin, Calcium, (human sera) Chloride, Cholesterol, Cholinesterase, HDL-Cholesterol, CK, Creatinine, Acid Phosphatase, Alkaline Phosphatase, Phosphorus, Glucose, γ -GT, Iron, Ldh, LDL-Cholesterol, Lipase, Magnesium, Potassium, Proteins, Sodium, Triglycerides, Uric Acid and Urea.
PREVECAL RHEUMA		
31009	12 x 1 mL	Anti-streptolysin O, C-reactive Protein and Rheumatoid Factors (human sera).
PREVECAL PROTEINS		
31010	12 x 1 mL	α 1-Acid Glycoprotein, Immunoglobulins (A, G and M), Complements C3 (human sera) and C4, Ferritin, Prealbumin and Transferrin.

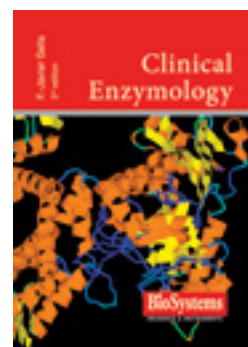
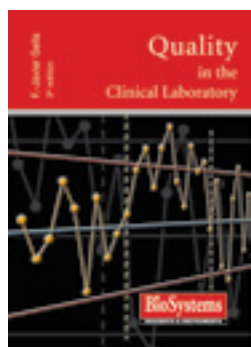
AUTOIMMUNITY

Code	Quantity	Components
PREVECAL ANA		
18046	12 x 0.3 mL	Antinuclear antibodies
PREVECAL ANCA		
18056	4 x 0.3 mL	ANCA
PREVECAL nDNA		
18047	2 x 0.3 mL	Anti-nDNA antibodies
PREVECAL CELIAC		
18051	4 x 0.3 mL	Anti-endomysium, anti-tTG, anti-Gliadin, and DGP antibodies.

All kits include general instructions and cards for results.

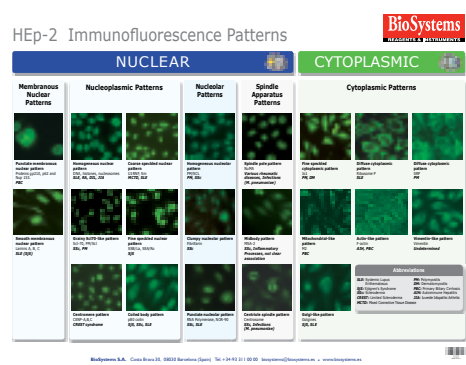
Support Material

Code	Characteristics
Books	
“QUALITY CONTROL IN THE CLINICAL LABORATORY”	
99563	Spanish
99653	English
“METROLOGY IN THE CLINICAL LABORATORY” 2nd Edition	
99644	Spanish
99733	English
“CLINICAL ENZYMOLOGY”	
99702	Spanish
99730	English
“IMMUNOFLUORESCENCE PATTERNS IN AUTOIMMUNITY”	
99698	English
AUTOANTIBODIES IN THE CLINICAL LABORATORY	
99831	English



Support Material

Code	Characteristics
Posters	
“INTERNAL QUALITY CONTROL”	
99734	Spanish
99790	English
“HEP-2 IMMUNOFLUORESCENCE PATTERNS”	
99729	English
99733	English
“REFERENCE VALUES AND CLINICAL SIGNIFICANCE”	
99807	English
99806	Spanish





Autoimmunity



Immunofluorescence

Code	Quantity	Description
ANTI-NUCLEAR ANTIBODIES HEp-2 (ANA-HEp-2)		
		HEp-2 cells
44108	24 tests	Complete kit, 6 wells
44508	60 tests	Complete kit, 6 wells
44509	120 tests	Complete kit, 12 wells
44546	10 slides	Slide box, 6 wells
44547	10 slides	Slide box, 12 wells
ANTI-nDNA ANTIBODIES (nDNA)		
		Crithidia luciliae
44825	24 tests	Complete kit, 6 wells
44818	60 tests	Complete kit, 6 wells
44817	120 tests	Complete kit, 12 wells
44820	10 slides	Slide box, 6 wells
44819	10 slides	Slide box, 12 wells
ANTI-NEUTROPHIL CYTOPLASMIC ANTIBODIES (ANCA)		
		Ethanol fixed ANCA
44850	24 tests	Complete kit, 6 wells
44851	60 tests	Complete kit, 6 wells
44852	10 slides	Slide box, 6 wells
		Formalin fixed ANCA
44878	10 slides	Slide box, 6 wells
44898	60 tests	Complete kit, 6 wells
		Methanol fixed ANCA
44895	10 slides	Slide box, 6 wells
44911	10 slides	Slide box, 12 wells
ANTI-ENDOMYSIUM ANTIBODIES (AEA)		
		Monkey Esophagus (Endomysium)
44548	48 tests	Complete kit, 4 wells
44715	96 tests	Complete kit, 8 wells
44557	12 slides	Slide box, 4 wells
44710	12 slides	Slide box, 8 wells

Code	Quantity	Description
AUTOANTIBODIES RL/RK/RS (ANA-AMA-ASMA-APCA-LKM)		
		Rat Liver/Kidney/Stomach
44558	48 tests	Complete kit, 4 wells
44648	96 tests	Complete kit, 8 wells
44570	12 slides	Slide box, 4 wells
44639	12 slides	Slide box, 8 wells
AUTOANTIBODIES MsL/MsK/MsS (ANA-AMA-ASMA-APCA-LKM)		
		Mouse Liver/Kidney/Stomach
44826	12 slides	Slide box, 4 wells
44827	12 slides	Slide box, 8 wells
ANTI-MITOCHONDRIAL ANTIBODIES (AMA)		
		Rat Kidney
44510	48 tests	Complete kit, 4 wells
44514	96 tests	Complete kit, 8 wells
44511	12 slides	Slide box, 4 wells
44515	12 slides	Slide box, 8 wells
ANTI-SMOOTH MUSCLE ANTIBODIES (ASMA)		
		Rat Stomach
44520	48 tests	Complete kit, 4 wells
44524	96 tests	Complete kit, 8 wells
44521	12 slides	Slide box, 4 wells
44525	12 slides	Slide box, 8 wells
GLOMERULAR BASEMENT MEMBRANE ANTIBODIES (GBMA)		
		Monkey Kidney
44588	12 slides	Slide box, 4 wells
ANTI-ADRENAL CORTEX ANTIBODIES (AACa)		
		Monkey Adrenal
44574	12 slides	Slide box, 4 wells

Immunofluorescence

Code	Quantity	Description
ANTI-STRIATED MUSCLE ANTIBODIES (ASiMA)		
		Rat Striated Muscle
44649	12 slides	Slide box, 4 wells
ANTI-ISLET CELL ANTIBODIES (AICA)		
		Monkey Pancreas
44609	48 tests	Complete kit, 4 wells*
44572	12 slides	Slide box, 4 wells
ANTI-THYROID ANTIBODIES (ATA)		
		Monkey Thyroid
44550	48 tests	Complete kit 4 wells
44551	12 slides	Slide box, 4 wells
ANTI-SKIN ANTIBODIES (ASA)		
		Monkey Esophagus
44560	48 tests	Complete kit, 4 wells*
44561	12 slides	Slide box, 4 wells
ANTI-KERATIN ANTIBODIES (AKA)		
		Rat Esophagus
44618	48 tests	Complete kit, 4 wells*
44517	12 slides	Slide box, 4 wells
AUTOANTIBODIES DUO		
44874	60 tests	HEp2/ML. Slide box, 6 wells

Code	Quantity	Description
TISSUE SLIDES FOR RESEARCH USE ONLY (RUO)		
44571		Monkey Heart
44679		Monkey Stomach
44573		Monkey Ovary
44685		Monkey Sciatic Nerve
44687		Monkey Brain
44684		Monkey Cerebellum
44589		Monkey Hypophysis
44688		Monkey Jejunum
44638		Monkey Submaxillary
44566		Monkey Testicle
44516		Rat Colon
44527		Rat Sciatic Nerve

Conjugates for Monkey tissues

IgG FITC/Evans (M)

44847	3.5 mL	Anti-(Monkey adsorbed) IgG FITC conjugate, contains Evans Blue.
44882	10 mL	For use with AEA, GBMA, AICA, ATA, ASA and AACA.

IgA FITC/Evans

44692	3.5 mL	Anti-IgA FITC conjugate, contains Evans Blue.
44835	10 mL	For use with AEA.

Conjugates for Rat and Mouse tissues

FITC/Evans (R)

44590	3.5 mL	(Rat adsorbed) Anti-IgG, IgA, IgM FITC conjugate, contains Evans Blue.
44836	10 mL	For use with Autoantibodies Screening, AMA and ASMA.

Conjugates for HEp-2, nDNA and ANCA

IgG FITC/Evans

44697	3 mL	Anti-IgG FITC conjugate, contains Evans Blue.
44834	10 mL	For use with HEp-2, nDNA, ANCA AStMA and AKA.

Immunofluorescence

Code	Quantity	Description
Auxiliary Reagents		
Miscellaneous		
44846	10 mL	Glycin (for GBMA)
44592	100 mL	PBS (10x)
44694	3 mL	Mounting medium
44897	100 u.	Coverslips (24 x 60 mm)
Immunofluorescence Controls*		
44696	0.3 mL	Negative Control
44889	2.0 mL	Negative Control
44730	0.3 mL	Anti-Nuclear Antibodies-Homogeneous Positive Control
44888	2.0 mL	Anti-Nuclear Antibodies-Homogeneous Positive Control
44585	0.3 mL	Anti-Nuclear Antibodies-Centromere Positive Control
44504	0.3 mL	Anti-Nuclear Antibodies-Nucleolar Positive Control
44503	0.3 mL	Anti-Nuclear Antibodies-Speckled Positive Control
44549	0.3 mL	Anti-Endomysium Antibodies Positive Control
44893	2.0 mL	Anti-Endomysium Antibodies Positive Control
44512	0.3 mL	Anti-Mitochondrial Antibodies Positive Control
44891	2.0 mL	Anti-Mitochondrial Antibodies Positive Control
44522	0.3 mL	Anti-Smooth Muscle Antibodies Positive Control
44892	2.0 mL	Anti-Smooth Muscle Antibodies Positive Control
44553	0.3 mL	Anti-Thyroid Antibodies Positive Control
44542	0.3 mL	Anti-nDNA Antibodies Positive Control
44894	2.0 mL	Anti-nDNA Antibodies Positive Control
44854	0.3 mL	C-ANCA Positive Control
44855	0.3 mL	P-ANCA Positive Control
44896	0.3 mL	X-ANCA Positive Control

*Sale of controls is subject to availability

ELISA

Code	Quantity	Description
ANA-SCREENING		
44785	96 tests	Purified SSA(Ro), SSB(La), Sm/RNP, RNP (70, A and C), Sm, Scl70, Jo1, dsDNA, ssDNA, nucleosomes, total histones, PMScl 100, Centromere B
ENA 6-SCREENING		
44740	96 tests	SSA (Ro), SSB (La), Sm, Sm/RNP, Jo1, Scl70
ENA 4-PROFILE		
44775	96 tests	Highly purified SSA, SSB, Sm, Sm/RNP
ENA 6-PROFILE		
44910	96 tests	Highly purified SSA (Ro), SSB (La), Sm, Sm/RNP, Jo1, Scl70
ANTI-Sm ANTIBODIES		
44755	96 tests	Highly purified Human antigen
ANTI-Sm/RNP ANTIBODIES		
44770	96 tests	Highly purified Human antigen
ANTI-SSA (Ro) ANTIBODIES		
44765	96 tests	Highly purified antigen
ANTI-SSB (La) ANTIBODIES		
44750	96 tests	Highly purified antigen
ANTI-CENTROMERE B ANTIBODIES (CENP-B)		
44865	96 tests	Recombinant antigen
ANTI-Jo1 ANTIBODIES		
44864	96 tests	Highly purified antigen
ANTI-Scl70 ANTIBODIES		
44863	96 tests	Highly purified antigen
ANTI-RIBOSOMAL P ANTIBODIES (Rib P)		
44866	96 tests	Highly purified antigen
ANTI-HISTONES ANTIBODIES (HIST)		
44862	96 tests	Highly purified antigen

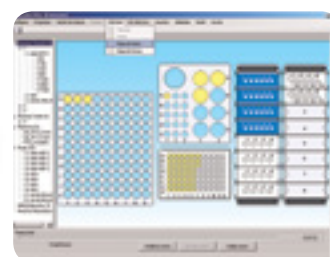
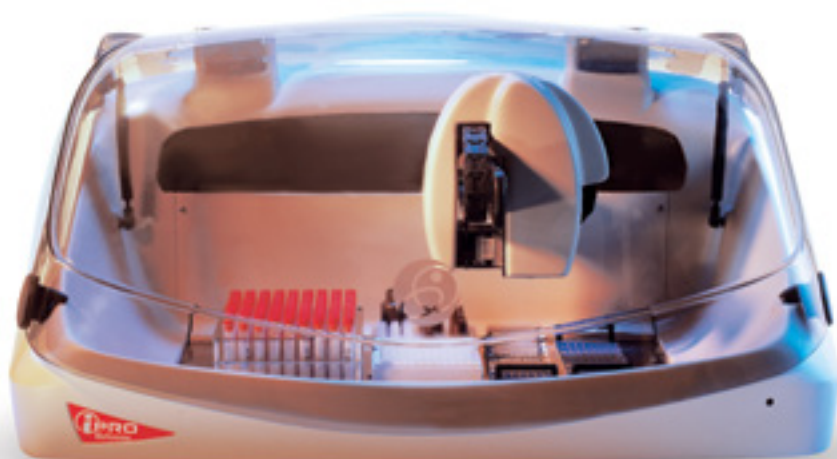
ELISA

Code	Quantity	Description
ANTI-NUCLEOSOME ANTIBODIES (NCL)		
44861	96 tests	Purified antigen
ANTI-dsDNA ANTIBODIES		
44705	96 tests	Calf thymus antigen
ANTI-CITRULLINATED PROTEIN ANTIBODIES (ACPA)		
44860	96 tests	Highly purified antigen
ANTI-CARDIOLIPIN ANTIBODIES (ACA-IgG/IgM)		
44780	96 tests	Highly purified antigen
ANTI-PHOSPHOLIPID ANTIBODIES IgG/IgM (APLA)		
44867	96 tests	Mixture of cardiolipin, phosphatidyl serine, phosphatidyl inositol, phosphatidic acid and human β 2-Glycoprotein 1
ANTI-β2-GLYCOPROTEIN 1 ANTIBODIES IgG/IgM (β2-GP1)		
44868	96 tests	Highly purified antigen
ANTI-ANNEXIN V ANTIBODIES IgG/IgM (ANX)		
44869	96 tests	Highly purified antigen
ANTI-PR3 ANTIBODIES (C-ANCA)		
44791	96 tests	Purified human antigen
ANTI-MPO ANTIBODIES (P-ANCA)		
44790	96 tests	Purified human antigen
ANTI-BPI ANTIBODIES		
44905	96 tests	Purified human antigen
ANTI-CATHEPSIN G ANTIBODIES		
44906	96 tests	Purified human antigen
ANTI-ELASTASE ANTIBODIES		
44907	96 tests	Purified human antigen
ANTI-LACTOFERRIN ANTIBODIES		
44908	96 tests	Purified human antigen

Code	Quantity	Description
ANTI-LYSOZYME ANTIBODIES		
44909	96 tests	Purified human antigen
ANTI-GLOMERULAR BASEMENT MEMBRANE ANTIBODIES (GBM)		
44870	96 tests	Highly purified antigen
ANTI-tTRANSGLUTAMINASE IgA ANTIBODIES (Anti-tTG IgA)*		
44754	96 tests	Recombinant human antigen activated by calcium and gliadin
ANTI-tTRANSGLUTAMINASE IgG ANTIBODIES (Anti-tTG IgG)*		
44798	96 tests	Recombinant human antigen activated by calcium and gliadin
ANTI-GLIADIN ANTIBODIES (AGA-IgG/IgA)		
44704	96 tests	Gliadin
ANTI-DEAMIDATED GLIADIN (DGP-IgG)		
44884	96 tests	Synthetic deamidated gliadin
ANTI-DEAMIDATED GLIADIN (DGP-IgA)		
44885	96 tests	Synthetic deamidated gliadin
ANTI-SACCHAROMYCES CEREVISIAE ANTIBODIES IgG/IgA (ASCA)		
44872	96 tests	Highly purified mannan from Saccharomyces cerevisiae
ANTI-THYROID PEROXIDASE ANTIBODIES (anti-TPO)		
44795	96 tests	Recombinant human thyroid Peroxidase
ANTI-thyroglobulin ANTIBODIES (anti-TG)		
44796	96 tests	Highly purified human antigen
ANTI-INSULIN ANTIBODIES		
44873	96 tests	Mixture of recombinant and purified insulin
ANTI-M2 ANTIBODIES (M2)		
44871	96 tests	Highly purified mitochondrial M2 subtype antigen

*Available in some countries only

Instruments



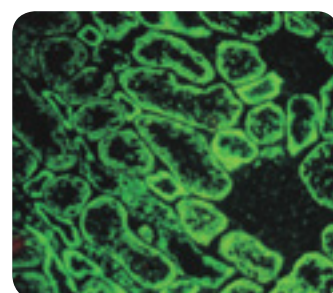
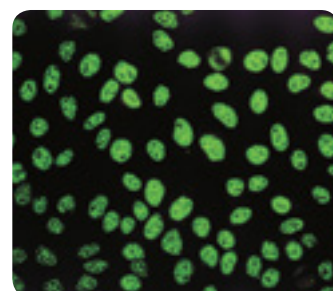
Immunofluorescence Processor

- ▶ Sample volume 3 μ L.
- ▶ Sample tray interchangeable racks (13mm x 100 mm, 15 mm x 100 mm or 2 mL).
- ▶ Dilution tray 96 vials (1.2 mL).
- ▶ Slides (plates) 16 (2).
- ▶ Reagent tray 8 conjugates (15 mL), 15 controls (2 mL), 1 additional diluent (50 mL).
- ▶ Reagents reservoirs 1 L bottle of washing solution, 1 L waste bottle, 1 L buffer bottle.
- ▶ Level sensor probe conductive.
- ▶ Slide washing flux system utilizing simultaneous dispensing and aspirating probes.
- ▶ Barcode reader hand-held barcode reader.

Code 84101

Consumables

Product	Code	Presentation
44592	100 mL	PBS (10x)
B013416	100 mL	Concentrated Washing Solution
AC14682	120 strips	iPro Dilution Tubes (1,1 mL)



Fluorescence Microscope (Led Technology)

- ▶ Optical system Infinity corrected plan objectives, (10x, 20x and 40x).
- ▶ Head & Eyepieces WF10x paired eyepiece.
- ▶ Bright Field Illumination 12V, 20W halogen light source with precentred light condenser bulb coupled with a collector lens system provides optimum brightness along the optical path.
- ▶ Fluorescence Light Source High power blue LED (470-480nm).
- ▶ Fluorescence Filters FITC.
- ▶ Power Supply 110 - 240V AC. 50/60Hz. Single phase.

Code 84201

Consumables

Code	Description
ME15035	4x objective
ME15039	100x objective
AC15045	Trinocular head
AC15277	Digital Camera

Instruments



Immunofluorescence Laboratory Software: Total Integration

- ▶ LIMS Communication.
- ▶ Bidirectional communication with iPro: import sessions and request new test.
- ▶ Patterns, titers and images of controls configurable by test.
- ▶ Patient results management in association with images from the camera (TWAIN compatible).
- ▶ Patient historical of results and images: SQL Server Database.
- ▶ Possibility to print results report with images.
- ▶ Image reference Atlas.

Code 84301



Serology

Serology

Code	Quantity	Method
ANTI-STREPTOLYSIN O (ASO) - SLIDE		
31448	1 x 3 mL	Agglutination
31019	50 tests	LATEX
31086	150 tests	
C-REACTIVE PROTEIN (CRP) - SLIDE		
31107	1 x 3 ml	Agglutination
31011	50 tests	LATEX
31012	150 tests	
RHEUMATOID FACTORS (RF) - SLIDE		
31108	1 x 3 ml	Agglutination
31013	50 tests	LATEX
31014	150 tests	
RPR-CARBON		
36001	100 tests	Agglutination
36002	500 tests	
TPHA		
36005	200 tests	Hemagglutination
FEBRILE SERODIAGNOSTICS MULTISCREENING		
33001	100 x 6 tests	Agglutination SLIDE AND TUBE TESTS Salmonella paratyphi AH, Salmonella paratyphi BH, Salmonella typhi H, Salmonella typhi O, B. abortus (Rose Bengal), Proteus O _x 19. Positive (Salmonella, Brucella and Proteus) and negative controls included.

Code	Quantity	Method
FEBRILE SERODIAGNOSTICS SALMONELLA		
33080	100 x 8 tests	Agglutination SLIDE AND TUBE TEST Salmonella paratyphi AO, Salmonella paratyphi AH, Salmonella paratyphi BO, Salmonella paratyphi BH, Salmonella paratyphi CO, Salmonella paratyphi CH, Salmonella typhi H, Salmonella typhi O.
FEBRILE ANTIGENS		
33309	5 mL	Brucella abortus
33315	5 mL	Brucella abortus (Rose Bengal)
33301	5 mL	Salmonella paratyphi AH
33302	5 mL	Salmonella paratyphi AO
33303	5 mL	Salmonella paratyphi BH
33304	5 mL	Salmonella paratyphi BO
33305	5 mL	Salmonella paratyphi CH
33306	5 mL	Salmonella paratyphi CO
33307	5 mL	Salmonella typhi H
33308	5 mL	Salmonella typhi O
33311	5 mL	Proteus O _x 19

Alphabetical Index

	Page
A	
5-AMINOLEVULINIC ACID (ALA)/ PORPHOBILINOGEN (PBG)	16
α -AMYLASE DIRECT	4
α -AMYLASE PANCREATIC	4
α -AMYLASE-EPS	4
α 1-ACID GLYCOPROTEIN	4
A15 / A25 (Consumables)	21
ACID PHOSPHATASE (ACP)	4
ACTIVATED PARTIAL THROMBOPLASTIN TIME (APTT)	14
ADA	26
ADENOSINE DEAMINASE (ADA)	4
ADENOSINE DEAMINASE (ADA)	17
ALANINE AMINOTRANSFERASE (ALT/GPT)	4
ALBUMIN	4
ALBUMIN (MICROALBUMINURIA)	4
ALBUMIN (MICROALBUMINURIA)	17
ALKALINE PHOSPHATASE (ALP)-AMP	5
ALKALINE PHOSPHATASE (ALP)-DEA	5
ANA-SCREENING	37
ANGIOTENSIN CONVERTING ENZYME (ACE)	5
ANTI-ADRENAL CORTEX ANTIBODIES (AACA)	33
ANTI-ANNEXIN V ANTIBODIES IgG/IgM (ANX)	38
ANTI- β 2-GLYCOPROTEIN 1 ANTIBODIES IgG/IgM (β 2-GP1)	38
ANTI-BPI ANTIBODIES	38
ANTI-CARDIOLIPIN ANTIBODIES (ACA-IgG/IgM)	38
ANTI-CATHEPSIN G ANTIBODIES	38
ANTI-CENTROMERE B ANTIBODIES (CENP-B)	37
ANTI-CITRULLINATED PROTEIN ANTIBODIES (ACPA)	38
ANTI-DEAMIDATED GLIADIN (DGP-IgA)	39
ANTI-DEAMIDATED GLIADIN (DGP-IgG)	39
ANTI-dsDNA ANTIBODIES	38
ANTI-ELASTASE ANTIBODIES	38
ANTI-ENDOMYSIUM ANTIBODIES (AEA)	32
ANTI-GLIADIN ANTIBODIES (AGA-IgG/IgA)	39
ANTI-GLOMERULAR BASEMENT MEMBRANE ANTIBODIES (GBM)	39
ANTI-HISTONES ANTIBODIES (HIST)	37
ANTI-INSULIN ANTIBODIES	39
ANTI-ISLET CELL ANTIBODIES (AICA)	34
ANTI-Jo1 ANTIBODIES	37
ANTI-KERATIN ANTIBODIES (AKA)	34

	Page
ANTI-LACTOFERRIN ANTIBODIES	38
ANTI-LYSOZYME ANTIBODIES	39
ANTI-M2 ANTIBODIES (M2)	39
ANTI-MITOCHONDRIAL ANTIBODIES (AMA)	33
ANTI-MPO ANTIBODIES (P-ANCA)	38
ANTI-nDNA ANTIBODIES (nDNA)	32
ANTI-NEUTROPHIL CYTOPLASMIC ANTIBODIES (ANCA)	32
ANTI-NUCLEAR ANTIBODIES HEp-2 (ANA-HEp-2)	32
ANTI-NUCLEOSOME ANTIBODIES (NCL)	38
ANTI-STREPTOLYSIN O (ASO)	17
ANTI-PHOSPHOLIPID ANTIBODIES IgG/IgM (APLA)	38
ANTI-PR3 ANTIBODIES (C-ANCA)	38
ANTI-RIBOSOMAL P ANTIBODIES (Rib P)	37
ANTI-SACCHAROMYCES CEREVISIAE ANTIBODIES IgG/IgA (ASCA)	39
ANTI-Scl70 ANTIBODIES	37
ANTI-SKIN ANTIBODIES (ASA)	34
ANTI-Sm ANTIBODIES	37
ANTI-Sm/RNP ANTIBODIES	37
ANTI-SMOOTH MUSCLE ANTIBODIES (ASMA)	33
ANTI-SSA (Ro) ANTIBODIES	37
ANTI-SSB (La) ANTIBODIES	37
ANTI-STREPTOLYSIN O (ASO)	5
ANTI-STREPTOLYSIN O (ASO) - SLIDE	44
ANTI-STRIATED MUSCLE ANTIBODIES (ASiMA)	34
ANTI-thyroglobulin ANTIBODIES (anti-TG)	39
ANTI-THYROID ANTIBODIES (ATA)	34
ANTI-THYROID PEROXIDASE ANTIBODIES (anti-TPO)	39
ANTI-tTRANSGLUTAMINASE IgA ANTIBODIES (Anti-tTG IgA)*	39
ANTI-tTRANSGLUTAMINASE IgG ANTIBODIES (Anti-tTG IgG)*	39
ANTITHROMBIN III	5
APOLIPOPROTEIN A-1 (APO A-1)	5
APOLIPOPROTEIN A-I	17
APOLIPOPROTEIN B	17
APOLIPOPROTEIN B (APO B)	5
ASPARTATE AMINOTRANSFERASE (AST/GOT)	5
AUTOANTIBODIES DUO	34
AUTOANTIBODIES MsL/MsK/MsS (ANA-AMA-ASMA-APCA-LKM)	33
AUTOANTIBODIES RL/RK/RS (ANA-AMA-ASMA-APCA-LKM)	33
B	
β -HYDROXYBUTYRATE	6

	Page
β2-MICROGLOBULIN	6
β2-MICROGLOBULIN	17
β2-MICROGLOBULIN	26
β2-MICROGLOBULIN URINE	26
BA400 Consumables	23
BILIRRUBIN (DIRECT)	6
BILIRRUBIN (DIRECT) (AS)	6
BILIRRUBIN (TOTAL AND DIRECT)	6
BILIRRUBIN (TOTAL)	6
BILIRUBIN	17
BIOCHEMISTRY	17
BIOCHEMISTRY (HUMAN)	17
BIOCHEMISTRY SERUM	26
BIOCHEMISTRY SERUM (HUMAN)	26
BIOCHEMISTRY URINE	26
C	
C-REACTIVE PROTEIN (CRP)	8
C-REACTIVE PROTEIN (CRP) - SLIDE	44
C-REACTIVE PROTEIN hs (CRP-hs)	8
C-REACTIVE PROTEIN-er (CRP-er)	8
CALCIUM-ARSENATO	6
CALCIUM-CRESOLPHTHALEIN	6
CALCIUM-MTB	6
CARBON DIOXIDE	17
CARBON DIOXIDE	26
CARBON DIOXIDE (CO2)	7
CHOLESTEROL	7
CHOLESTEROL HDL	7
CHOLESTEROL HDL DIRECT	7
CHOLESTEROL HDL PRECIPITATING REAGENT	7
CHOLESTEROL HDL/LDL	17
CHOLESTEROL LDL DIRECT	7
CHOLESTEROL LDL PRECIPITATING REAGENT	7
CHOLINESTERASE (CHE)	7
CITRATE	7
CK-MB	18
CK-MB SERUM	26
COAGULATION CALIBRATOR	14
COAGULATION CONTROL	14
COMPLEMENT COMPONENT C3	8

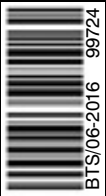
	Page
COMPLEMENT COMPONENT C4	8
CONTROL URINE	16
CREATINE KINASE (CK)	8
CREATINE KINASE-MB (CK-MB)	8
CREATININE	8
CREATININE ENZYMATIC	9
CRP-er	18
CRP/CRP-hs	18
CYSTATIN C	9
CYSTATIN C	18
CYSTATIN C	26
E	
ENA 4-PROFILE	37
ENA 6-PROFILE	37
ENA 6-SCREENING	37
F	
FEBRILE ANTIGENS	45
FEBRILE SERODIAGNOSTICS MULTISCREENING	44
FEBRILE SERODIAGNOSTICS SALMONELLA	45
FERRITIN	9
FERRITIN	18
FERTILITY BIOCHEMISTRY	27
FIBRINOGEN	9
FIBRINOGEN	18
FIBRINOGEN	27
FIBRINOGEN CLAUSS	14
FITC/Evans (R)	35
FRUCTOSAMINE	9
FRUCTOSAMINE	27
FRUCTOSE	9
G	
γ-GLUTAMYLTRANSFERASE (γ-GT)	9
GLOMERULAR BASEMENT MEMBRANE ANTIBODIES (GBMA)	33
GLUCOSE	9
GLUCOSE-HEXOKINASE	9
H	
5-HYDROXYINDOLEACETIC ACID (5-HIAA)	16
17-HYDROXYCORTICOSTEROIDS (17-OH)	16
HA3 (Consumables)	15
HbA1C-DIRECT	18

Alphabetical Index

	Page
HbA1C-ENZYMATIC	18
HEMOGLOBIN A1C	16
HEMOGLOBIN A1C	27
HEMOGLOBIN A1C-DIRECT (HbA1C-DIR)	10
HEMOGLOBIN A1C-ENZYMATIC (HbA1C-ENZ)	10
HEMOGLOBIN A2	16
HEMOGLOBIN A2	27
HOMOCYSTEINE	10
HOMOCYSTEINE	18
HOMOCYSTEINE	27
I	
IgA FITC/Evans	35
IgG FITC/Evans	35
IgG FITC/Evans (M)	35
iMLD (Consumables)	41
Immunofluorescence Controls*	36
Immunofluorescence Laboratory Software	42
IMMUNOGLOBULIN A (IgA)	10
IMMUNOGLOBULIN G (IgG)	10
IMMUNOGLOBULIN M (IgM)	10
iPRO (Consumables)	40
IRON-CHROMAZUROL	10
IRON-FERROZINE	10
K	
17-KETOSTEROIDS	16
L	
LACTATE	10
LACTATE DEHYDROGENASE (LDH)	11
LACTATE DEHYDROGENASE (LDH)-IFCC	11
LIPASE	11
LIPID SERUM	27
M	
MAGNESIUM	11
METANEPHRINES	16
Miscellaneous	36
O	
OXALATE	11
OXALATE URINE	27
P	
PHOSPHORUS	11
PREALBUMIN	11

	Page
PREVECAL ANA	28
PREVECAL ANCA	28
PREVECAL BIOCHEMISTRY (BOVINE)	28
PREVECAL BIOCHEMISTRY HUMAN	28
PREVECAL CELIAC	28
PREVECAL rDNA	28
PREVECAL PROTEINS	28
PREVECAL RHEUMA	28
PROTEIN	18
PROTEIN (TOTAL)	11
PROTEIN (URINE)	18
PROTEIN (URINE+CSF)	12
PROTEIN SERUM	27
PROTHROMBIN TIME (PT)	14
R	
<i>Reagents</i>	
RHEUMATOID FACTORS (RF)	12
RHEUMATOID FACTORS (RF)	18
RHEUMATOID FACTORS (RF) - SLIDE	44
RHEUMATOID SERUM	27
RPR-CARBON	44
S	
Support Material	29
T	
THROMBIN TIME (TT)	14
TISSUE SLIDES FOR RESEARCH USE ONLY (RUO)	35
TOTAL BILE ACID	12
TOTAL IRON BINDING CAPACITY (TIBC)	12
TPHA	44
TRANSFERRIN	12
TRIGLYCERIDES	12
U	
UNSATURATED IRON BINDING CAPACITY (UIBC)	12
UREA/ BUN-COLOR	12
UREA/ BUN-UV	13
URIC ACID	13
V	
VANILMANDELIC ACID	16
Z	
ZINC	13

35th ANNIVERSARY



Manufactured by: BioSystems S.A.
Costa Brava 30, 08030 Barcelona (Spain) Tel. +34 93 311 00 00
biosystems@biosystems.es - www.biosystems.es



- Certified Management System
- EN ISO 9001
- EN ISO 13485